

Colorado Measures of Academic Success



Grade 7 Social Studies



Paper Practice Resource for Students

Sample Items – Use with Sample Sources

Paper Practice Resource for Students

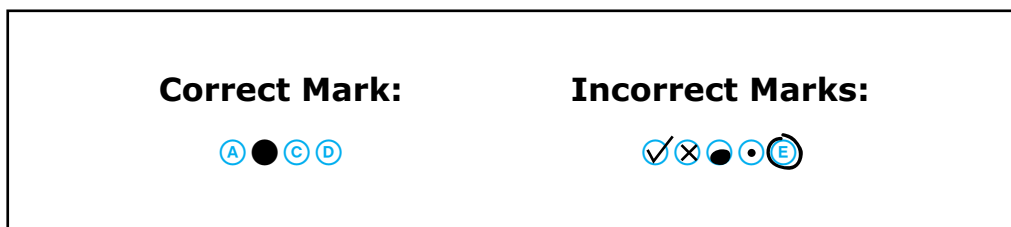
The Colorado Measures of Academic Success (CMAS) is Colorado’s standards-based assessment program designed to measure the Colorado Academic Standards (CAS) in the content areas of science, social studies, English language arts, and mathematics. The sample items included in this resource provide students with an opportunity to become familiar with the format of test items that appear in the paper-based test books. The sample items are not intended to be a complete test, nor are they intended to cover all assessed content or item types.

While the use of the sample items is not required, it is strongly encouraged to help ensure students are familiar with the types of items they may encounter while taking the paper-based test.

Item Types:

Selected Response Items

Selected response items are multiple choice questions. To respond, the student indicates their response by filling in the circle(s) next to their answer choice.



Constructed Response Items

Constructed response items are questions or prompts that require an independent, written response. To respond, the student writes his or her answer in the response box in the test book.

Converted Online Technology-Enhanced Item Types

Online technology-enhanced items converted to the paper testing format may ask students to:

- Circle the correct answer
- Complete a table with checkmarks, Xs, or letters from a list of answer choices
- Fill in the blank
- Draw lines from boxes to correct answers
- Complete a bar graph or histogram

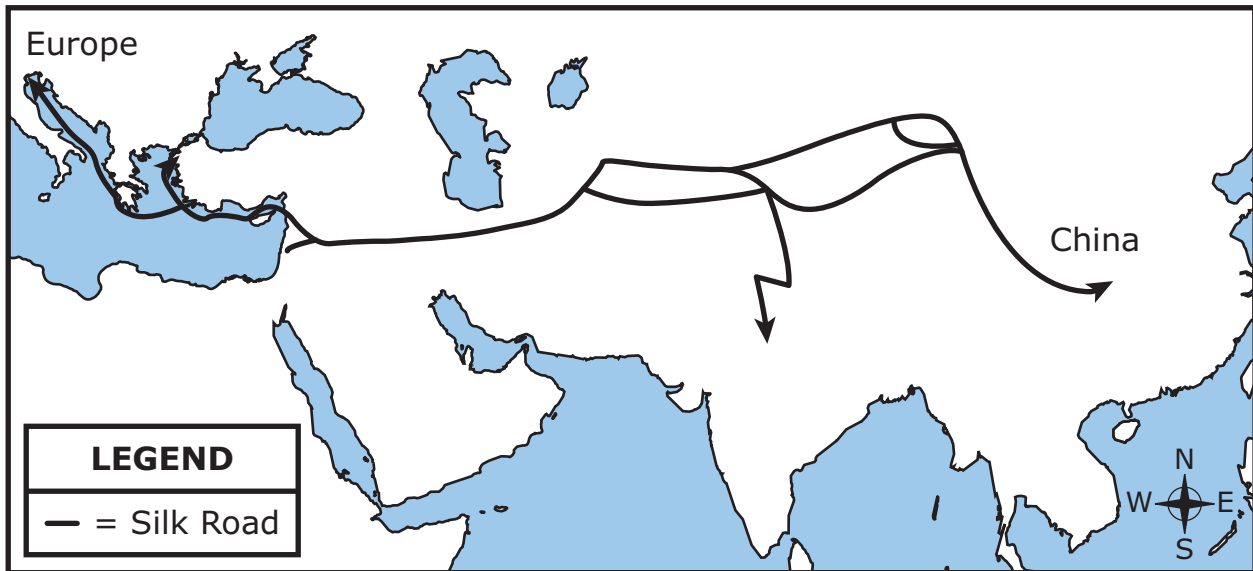
Performance Events

A performance event is a group of items that relate to a set of sources about a social studies topic. Refer to the Sample Sources document for the sources that correspond to the sample items in this document.

ITEM SET 1

1. Study the map.

The Silk Road, 800s–1400s



What was one early effect of these trade routes?

- (A) Navigation improved through use of the telescope.
- (B) Chinese technology was introduced to Europe.
- (C) Crop rotation increased food production.
- (D) China defeated the Mongol invasion.

2. Read the information.

The Magna Carta is considered an important document on England's path to democracy. King John of England was forced by some of his people to issue the Magna Carta in 1215. The Magna Carta declared that a parliament should be created to make laws and that people should be punished for breaking laws rather than for angering the king. These declarations reduced the king's power.

Based on the information, how did the Magna Carta change the government of England?

- A a small group of people who kept order by force
- B a leader chosen by the majority of the people
- C a direct democracy that voted on laws
- D a king and a system of laws

3. Read the information.

Benefits of the ocean:

- Water absorbs carbon dioxide and heat from the atmosphere
- People can scuba dive and enjoy other tourist activities
- Minerals can be extracted from the sea floor
- Goods can be transported long distances
- Plankton add oxygen to the air

Based on the information, what are **three economic** uses of the oceans?

- Ⓐ temperature regulation
- Ⓑ mining opportunities
- Ⓒ cargo shipping
- Ⓓ air purification
- Ⓔ recreation

Directions: You will use the information in your Source Book to answer the following set of questions. Open Source Set 1 of your Source Book and study the Punic Wars Sources on pages 6 through 11 to answer questions 4 through 9.

4. Using Source 4, which statement **best** describes Scipio's point of view in the final quotation about the Third Punic War?
- Ⓐ Scipio is upset at his inability to collect the city's riches, even though Carthage is wealthy.
 - Ⓑ Scipio is worried about famine among his soldiers during their battle with Carthage.
 - Ⓒ Scipio is sad to witness the loss of a great city, even though Carthage is his enemy.
 - Ⓓ Scipio is worried about the threat of the armies and weapons of Carthage.

5. Based on the sources, which of these is an event that occurred during the Third Punic War?
- Ⓐ The Romans and Carthaginians fought a war against other nations and then went to war with each other.
 - Ⓑ The Romans defended themselves from a Carthaginian surprise attack on their sea ports and harbors.
 - Ⓒ The Romans and Carthaginians fought a war on land they both thought they owned.
 - Ⓓ The Romans traveled to Carthage and attacked the city to destroy a rival power.

6. Using the sources, determine the effects of the Punic Wars. Write **one** letter in each box to correctly complete the table.

Effects of the Punic Wars

Effect of the First Punic War	Rome took possession of the island of Sicily.
Effect of the Second Punic War	
Effect of the Third Punic War	
Long-Term Effect of the Punic Wars	

A. Rome became the dominant power throughout the Mediterranean region.

B. Rome destroyed Carthage.

C. Rome possessed much of the western Mediterranean.

Directions: Use the information below to answer the question on the next page.

10. Study the information.



© age fotostock Spain, S.L. / Alamy

Roman aqueduct in Segovia, Spain

The Roman Empire constructed aqueducts to supply water to Rome and to cities in its territories. An aqueduct is a bridge or trough for water; the Romans constructed them from brick, stone, or concrete. Some aqueducts were underground, and others were on arched bridges built at a slight angle so that water could flow over uneven ground.

Draw a line from each effect of the Roman aqueducts to its place in the table.

Uses for Freshwater	Effects of Aqueducts
<ul style="list-style-type: none"> • to irrigate crops during dry seasons • to remove rock and dirt during mining 	
<ul style="list-style-type: none"> • to provide fresh water for use in the home • to remove wastewater 	
<ul style="list-style-type: none"> • to supply fountains throughout the city • to supply public baths where Romans had social gatherings 	

to provide citizens with enjoyment

to reduce the likelihood of diseases

to support work

11. Which statement **best** defines the law of supply and demand?

- (A) The law describes the relationship between the quantities of a good consumers are willing to buy and the quantities producers are willing to provide at a certain price.
- (B) The law describes the connection between the amount of investor funding provided to an industry and the price and quantities of goods produced by the industry.
- (C) The law determines the level at which tariffs on imported goods stop generating an additional unit of government revenue.
- (D) The law compares the price and quality of various competing goods as the quantities of the goods change.

12. Read the information.

The United Nations Economic Commission for Africa (UNECA) promotes economic cooperation among African nations. The commission works to increase investment in all areas of economic development: agriculture, industry, and transportation networks. The commission also encourages participation in large regional markets.

Which of these activities would **most likely** be encouraged by the UNECA?

- (A) selling military equipment to countries in Africa
- (B) constructing international highways in Africa
- (C) importing goods from Europe to Africa
- (D) taxing small businesses in Africa

13. Draw lines to match each type of tax to its definition.

Tax	Definition
income tax	tax paid when purchasing a product
property tax	tax paid to support retired workers
sales tax	tax paid to the government from your wages
Social Security tax	tax paid yearly on the value of a house

14. In which activity does the U.S. government require **most** adult citizens to participate?

- Ⓐ attending legislative hearings
- Ⓑ serving in the military
- Ⓒ voting in elections
- Ⓓ serving on juries

15. Read the information.

During the 1500s, Portugal established a trade agreement with the West African Kingdom of Kongo. This letter from King Alfonso I of Kongo to King João III of Portugal addresses trade relations between the two kingdoms.

Sir, Your Highness should know how our Kingdom is being lost in so many ways . . . since this is caused by the excessive freedom given . . . merchants who are allowed to come to this Kingdom to set up shops with goods . . . prohibited by us, and which they spread throughout our Kingdoms . . . so it is doing a great harm. . . .

— King Alfonso I, 1526

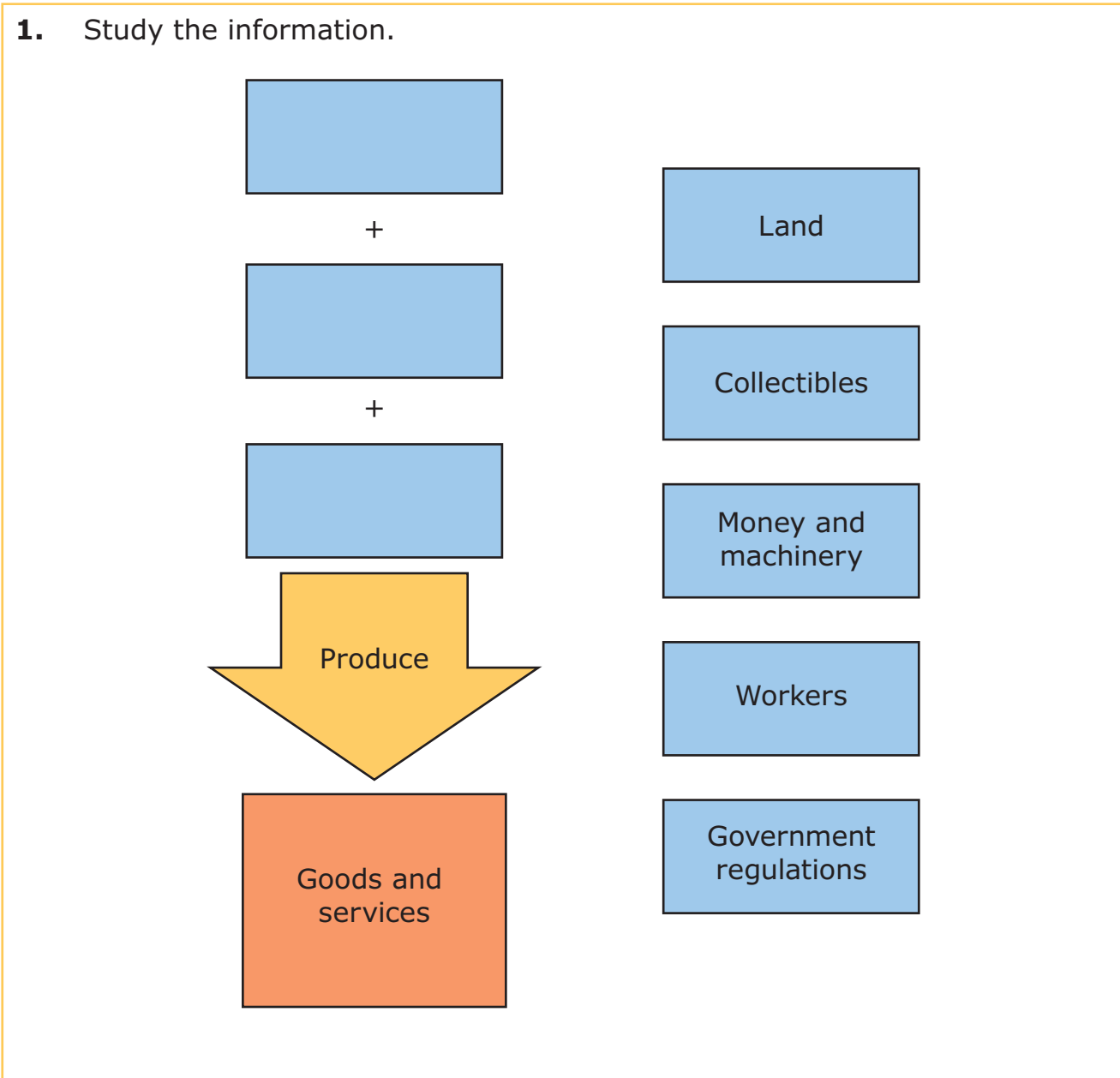
Which question should be asked in order to determine the accuracy of this account?

- Ⓐ How did this letter get from Portugal to the Kingdom of Kongo?
- Ⓑ What impact did this letter have on trade relations?
- Ⓒ How consistent is this letter with other sources?
- Ⓓ When was this letter translated into English?

This is the end of Item Set 1.

ITEM SET 2

Directions: Use the information below to answer the question on the next page.



Which **three** resources listed on the right **best** complete the diagram on the left?

(A)

Land

Collectibles

Money and machinery

(B)

Collectibles

Money and machinery

Government regulations

(C)

Land

Money and machinery

Workers

(D)

Land

Collectibles

Government regulations

2. Study the list.

Characteristics of Iran's Theocratic Government

- The country is ruled by the highest ranking religious leader.
- The elected officials have authority but must defer to the will of the religious leader.
- The legal system is based on religious principles.
- The Guardian Council of judges and religious leaders select candidates for election.
- _____

Which inference about the responsibility of a citizen of Iran can be made using the information in this list?

- Ⓐ Citizens must encourage religious conversion.
- Ⓑ Citizens must promote religious freedom.
- Ⓒ Citizens must observe religious holidays.
- Ⓓ Citizens must obey religious laws.

3. Read this passage.

Physical Environment of Japan

Japan is a small island country with an area of 377,915 square kilometers. In comparison, the United States has a total land area of 9,826,675 square kilometers. The land of Japan is largely mountainous. Due to this rugged terrain, very little of the land can be used for farming. Japan has one of the largest fishing fleets in the world. As a result, fishing is an important part of the economy. Japan has almost no natural resources, such as oil or natural gas, and there are few mineral deposits.

Based on this passage, how does the physical environment of Japan influence the economy?

- Ⓐ Factories process many types of agricultural products.
- Ⓑ Businesses must expand into rural areas.
- Ⓒ Mining provides many jobs to citizens.
- Ⓓ Companies must import fuel.

Directions: Use the information below to answer the question on the next page.

4. Study the chart.

	China	Japan
Voting	all citizens of age 18 have the right to vote	citizens of age 20 have the right to vote
Political Parties	one	nine
Employment	government assigns jobs to all citizens	citizens can choose their jobs
Education	children required to attend school until age 12	children required to attend school until age 15
Taxes	taxes paid on all income	taxes paid on all income

In which country do citizens have more rights? Use examples from the table to support your answer.

Directions: You will use the information in your Source Book to answer the following set of questions. Open Source Set 2 of your Source Book and study the Crusades Sources on pages 14 through 19 to answer questions 5 through 10.

5. Based on the map in Source 1, which statement is true?

- Ⓐ The First, Second, and Third Crusades joined together in Constantinople.
- Ⓑ The Second Crusade ended before reaching the Middle East.
- Ⓒ The Third Crusade had more starting points in Europe.
- Ⓓ The First Crusade reached an end near Paris.

6. Based on the sources, which statement regarding trade during the Crusades is **most** accurate?

- Ⓐ Europeans traded for most of their food with merchants from the Middle East.
- Ⓑ Europeans had a small number of goods to trade with Middle Easterners.
- Ⓒ Europeans had a more advanced trade system than Middle Easterners.
- Ⓓ Europeans traded precious metals for luxury goods from the Middle East.

7. Based on the sources, which city had equal religious significance for both Muslims and Christians?

- A Antioch
- B Constantinople
- C Damascus
- D Jerusalem

8. Based on the accounts from the First Crusade, explain two important concerns of the Crusaders and how the Crusaders dealt with these concerns. Use evidence from the sources to support your answer.

- 9.** During the Crusades, many Crusaders and Muslims lived in castles or walled fortresses. Using the sources, explain the advantages and disadvantages of living in a castle or walled fortress. Use evidence from the sources to support your answer.

10. Using the sources, explain why trade increased between the Middle East and Europe during the Crusades. Use evidence from the sources to support your response.

You have completed all questions related to the Crusades Sources.

11. Read the sentence and answer the question.

The rights of citizens are severely limited by a _____
whereas in a _____, citizens have more rights.

Which words **best** complete the sentence?

- Ⓐ totalitarian state, absolute monarchy
- Ⓑ constitutional monarchy, democracy
- Ⓒ totalitarian state, democracy
- Ⓓ republic, dictatorship

12. Study the information.

A new cell phone was released. The price of the cell phone was \$60 and thousands of cell phones were sold. After three months, however, the number of cell phones sold declined. Stores now have many cell phones sitting on shelves.

Circle the correct answers to complete the sentence.

What will the stores do to sell the remaining cell phones?

Stores will _____ the price of the cell phones

increase
decrease

due to _____.

rapid inflation
supply and demand
opportunity cost

13. Study the tables.

**Top World Oil Producers,
2011 (thousand barrels
per day)**

Rank	Country	Production
1	Saudi Arabia	11,153
2	Russia	10,229
3	United States	10,136
4	China	4,289

**Top World Oil Consumers,
2011 (thousand barrels
per day)**

Rank	Country	Consumption
1	United States	18,949
2	China	9,810
3	Japan	4,464
4	India	3,360

Source: Environmental Protection Agency

Which conclusion can be made based on the data in the tables?

- Ⓐ The United States consumption of oil is higher than its production of oil.
- Ⓑ Chinese production of oil is higher than its consumption of oil.
- Ⓒ Saudi Arabian consumption of oil is the highest in the world.
- Ⓓ The Indian consumption of oil is the lowest in the world.

14. Which factor would an economist consider to determine the demand for a good?

- Ⓐ the cost of the materials used to make the good
- Ⓑ how much of the good people are willing to buy
- Ⓒ whether the good is a renewable resource
- Ⓓ the location where the good is produced

15. Which group was allowed to be citizens in the ancient city-states Athens and Sparta?

- A foreign merchants
- B land-owning men
- C artisans
- D serfs

This is the end of Item Set 2.

ITEM SET 3

1. Study the information.

In Africa, camel caravans loaded with salt still travel the same paths salt caravans have traveled for thousands of years.

A salt caravan starts with workers loading salt that is in brick form onto camels. The people who lead the caravans direct the camels to walk in a line across vast areas of desert. When the caravan reaches a destination city, the salt is taxed, then unloaded as needed, and delivered to other areas.

What does the information describe?

- Ⓐ the packaging of salt
- Ⓑ the refining of salt
- Ⓒ a salt trade route
- Ⓓ a salt mine

2. Read this list.

Characteristics of Ancient Greece

- Limited farmland required the use of outside resources.
- Large coastline provided easy access to the sea.
- Surplus of olive oil, grape products, and pottery were available.

Which outcome was a result of these characteristics?

- Ⓐ establishment of extensive foreign trade routes
- Ⓑ the rise of an authoritarian government
- Ⓒ the growth of banking networks
- Ⓓ the elimination of social classes

3. Which statement describes citizen participation in the direct democracy of ancient Athens?

- A The citizens elected a group of representatives to create laws.
- B All citizens elected a single leader to make laws.
- C The wealthiest citizens voted on proposed laws.
- D All citizens voted on proposed laws.

Directions: You will use the information in your Source Book to answer the following set of questions. Open Source Set 3 of your Source Book and study the River Valley Civilizations Sources on pages 22 through 27 to answer questions 5 through 10.

5. Using the sources, circle the answer for each blank to **best** complete the sentences.

_____ is part of a region called the Fertile Crescent.

- Ancient China
- Mesopotamia
- The Indus Valley

It is the land located between the _____.

- Tigris and Euphrates Rivers
- Indus and Euphrates Rivers
- Tigris and Huang He Rivers
- Nile and Indus Rivers

It is the oldest of the early river civilizations, starting in

- _____.
- 3500 BC
 - 3200 BC
 - 2500 BC
 - 2100 BC

6. Based on Source 3, which activity **best** describes irrigation?

- (A) routing water to farmland for watering crops
- (B) predicting the occurrence of the next flood
- (C) planting crops that can withstand flooding
- (D) diverting water to improve soil quality

7. Which of these features is shown by **most** of the satellite photos in Source 2?

- Ⓐ the remains of ancient irrigation canals along the river
- Ⓑ the contrast between the desert and river basins
- Ⓒ the extent of each river and its basin
- Ⓓ the ancient farms along the rivers

8. Which statement is **best** supported by the sources?

- Ⓐ Farmland in Egypt was located closer to the river than farmland in Mesopotamia.
- Ⓑ The Chinese writing system had more symbols than the Sumerian system.
- Ⓒ Builders in Mohenjo-Daro were more skilled than builders in Sumer.
- Ⓓ The Huang He Valley was settled before the Nile Valley.

9. Discuss the ways that an early agricultural civilization may have benefitted from the development of a writing system. Use the sources to support your answer.

10. Which characteristics of the physical environment do the river valley civilizations share and how could these characteristics be important in the founding of a civilization? Use evidence from the sources to support your answer.

You have completed all questions related to the River Valley Civilizations Sources.

11. Study the information.

A popular new video game has a limited supply.

Which statement **best** explains how the price of this video game will be affected by the limited supply in a market economy?

- Ⓐ Government agencies will regulate supplies of the video game to control prices.
- Ⓑ Small businesses will increase prices for competing products.
- Ⓒ Consumers will purchase more copies of the video game.
- Ⓓ Manufacturers will increase the price of the video game.

Directions: Use the information below to answer the question on the next page.

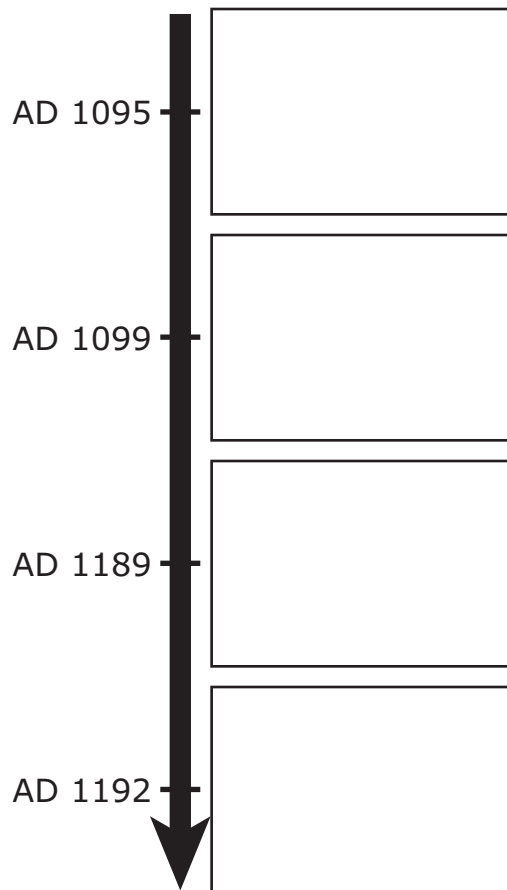
12. Study the information.

The First, Second, and Third Crusades

The Crusades were a series of campaigns in the Holy Land to capture or recapture Jerusalem, a city important to three of the world's major religions: Judaism, Christianity, and Islam. The Crusades were fought over a 200-year period beginning in 1095 when Pope Urban made an appeal to Christians to regain Jerusalem from Muslims.

In 1099 the First Crusaders captured Jerusalem. However, a disastrous Second Crusade ended in 1148. Afterward, Muslim leader Saladin recaptured Jerusalem. The recapture of Jerusalem prompted the Third Crusade in 1189. The English monarch Richard the Lionheart led the crusade after other leaders died or returned to Europe. While the Third Crusade was unsuccessful in taking Jerusalem, it resulted in a treaty between Richard the Lionheart and Saladin in 1192, allowing Christian pilgrims to worship in the city.

Order the events by writing the correct letter in each box on the timeline.



A. Muslims and Christians cooperate.

B. The Catholic Church calls for a crusade.

C. A crusade is successful for Christians.

D. A king leads a crusade.

13. Read the statements and answer the question.

Speaker 1:

I know my government is a/an
because I vote for government leaders
and participate in civic responsibilities.

Speaker 2:

I know my government is a/an
because leadership is inherited, and the
next leader will be the son of the current
leader.

What form of government **best** completes each statement?

- Ⓐ Speaker 1: democracy; Speaker 2: monarchy
- Ⓑ Speaker 1: monarchy; Speaker 2: democracy
- Ⓒ Speaker 1: theocracy; Speaker 2: oligarchy
- Ⓓ Speaker 1: oligarchy; Speaker 2: theocracy

14. Read the excerpt.

The Union shall . . . promote economic and social progress . . . through the establishment of economic and monetary union. . . .

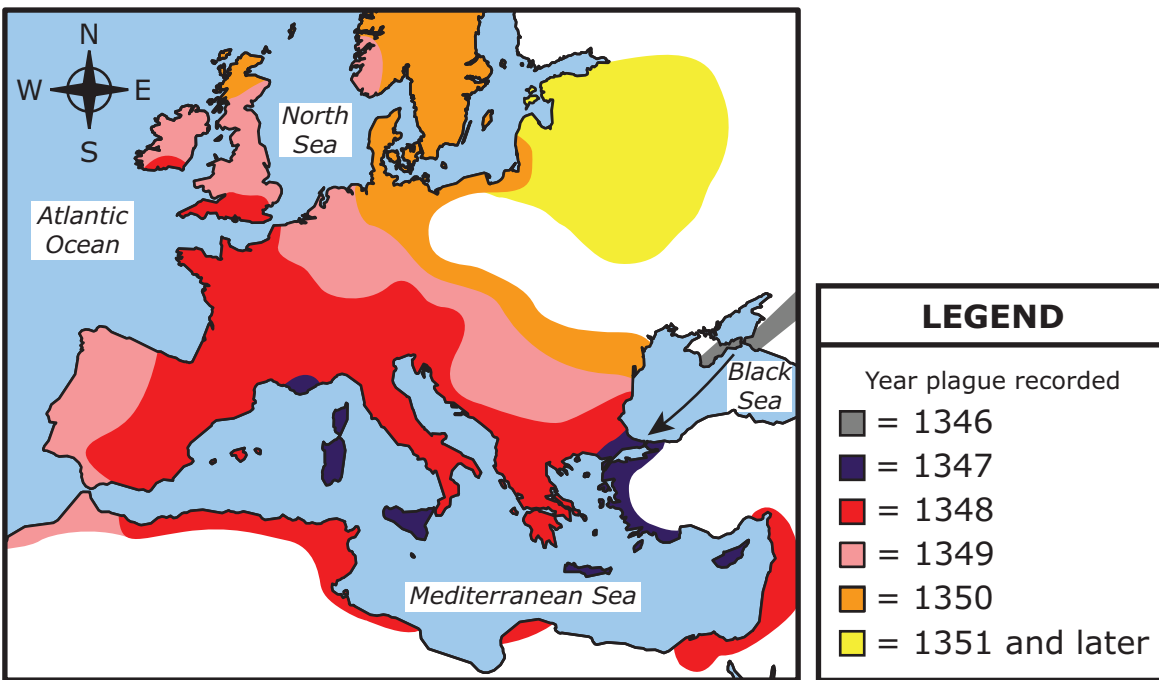
— Treaty on European Union, 1992

This excerpt describes an example of countries that collaborate to

- Ⓐ protect the environment.
- Ⓑ defend national borders.
- Ⓒ improve education.
- Ⓓ engage in trade.

15. Study the map.

Spread of the Bubonic Plague, 1346–1351 and Later



Which question can be answered based on the information in the map?

- (A) How did the bubonic plague change the size of Europe's population?
- (B) Which parts of Europe were first affected by the bubonic plague?
- (C) What prevented the spread of the bubonic plague in Africa?
- (D) How did the bubonic plague spread from North Africa?

This is the end of Item Set 3.

